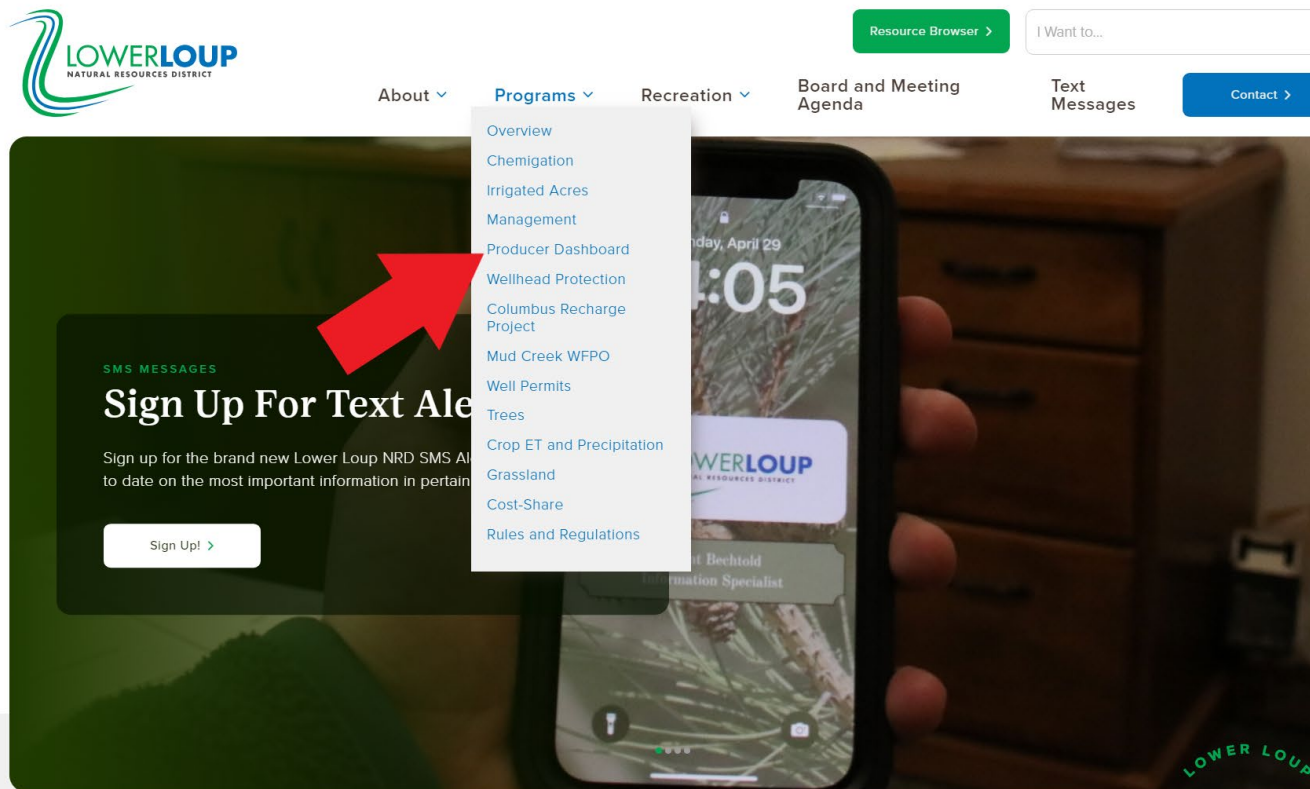


## WQMA Producer Dashboard How To

To sign-up for and use the LLNRD WQMA Producer Dashboard, you first will want to go to the Lower Loup NRD website at [www.llnrd.org](http://www.llnrd.org).

Once on the site, in the main menu under the programs tab, you will click on Producer Dashboard



We're committed to safeguarding the environment through erosion prevention, flood management, floodwater and

You will be brought to a page containing a link to the Dashboard.

The screenshot shows the top navigation bar of the Lower Loup Natural Resources District website. On the left is the logo for Lower Loup Natural Resources District. The navigation menu includes links for About, Programs, Recreation, Board and Meeting Agenda, Text Messages, and Contact. A search bar is located on the right with the placeholder text "I Want to...". Below the navigation is a hero section with a background image of an irrigation system. The text in the hero section reads: "WQMA PRODUCER DATA ENTRY DASHBOARD" and "This dashboard saves you time by making it simple to enter your field data!". A breadcrumb trail at the bottom left of the hero section reads: "Home » Programs » WQMA Producer Data Entry Dashboard".

- Overview
- Chemigation
- Irrigated Acres
- Management
- Producer Dashboard**
- Wellhead Protection
- Columbus Recharge Project
- Mud Creek WFPO
- Well Permits
- Trees

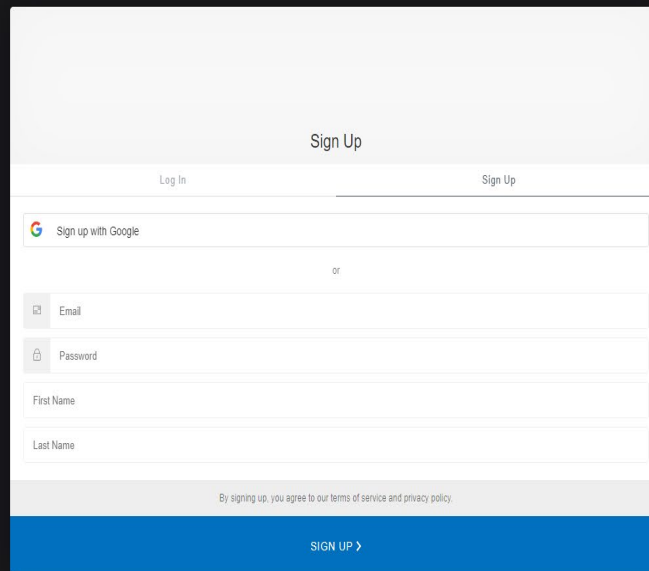
### [Link to Dashboard](#)



On initial sign-up, please contact the Lower Loup NRD Headquarters to set up an authentication account.



Once you click on the link, you will be taken to a login page. The first time you are on this page, you will need to sign up for the service. Click the Sign Up tab, enter your email, a password that meets the site criteria, your first and last name, and once all fields have been filled click the blue Sign Up button.



Sign Up

Log In Sign Up

Sign up with Google

or

Email

Password

First Name

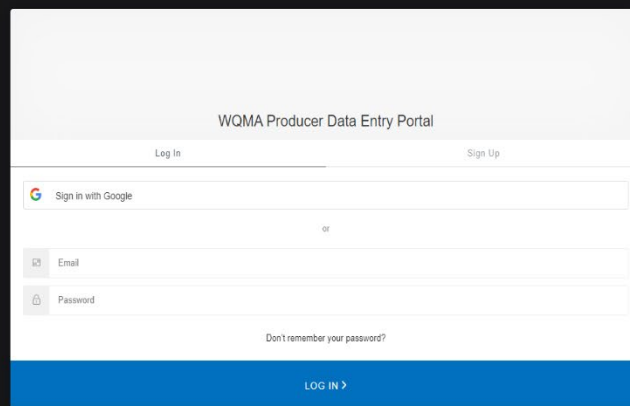
Last Name

By signing up, you agree to our terms of service and privacy policy.

SIGN UP >

After signing up, contact the LLNRD Headquarters by calling (308) 728-3221. Give your name and email that you used to sign up and the LLNRD staff will link your field maps and reports to your account.

Once the NRD has linked your reports and maps, you can go back to the Dashboard login page and login using the credentials that you created.



The screenshot shows the login page for the WQMA Producer Data Entry Portal. The page has a white background with a blue footer. At the top, the title "WQMA Producer Data Entry Portal" is centered. Below the title, there are two links: "Log In" on the left and "Sign Up" on the right. A "Sign in with Google" button is prominently displayed. Below this, the word "or" is centered. There are two input fields: "Email" and "Password", each with a small icon to its left. Below the password field, there is a link that says "Don't remember your password?". At the bottom of the form area, there is a blue button with the text "LOG IN >".

Once you have logged in, you should see a field map with reports listed below. Clicking on the reports listed below will bring up the maps for each specific field.

Click on the field shown on the map to bring up the report popup for the field. In the report popup, you can click Add/Edit Details to submit your data.

### Irrigation Systems - Dashboard

Use alternate color scheme



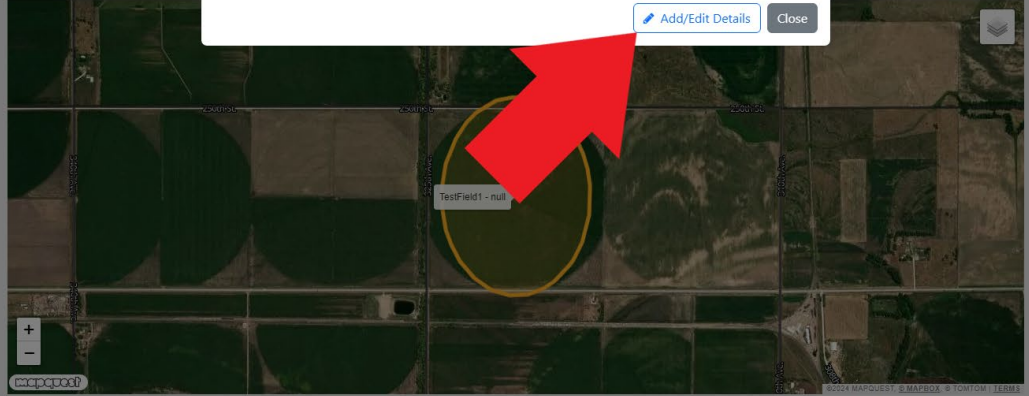
IS #	Field Name	Acres	Status
WQMA Reports	TestField1		Not Submitted

Showing 1 to 1 of 1 entries



### Irrigation Systems

Use alternate color scheme



Crop Planted	Acres	Status
CORN	135	Saved

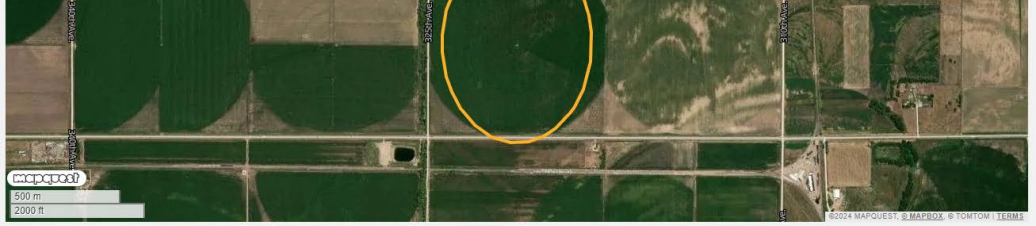
Showing 1 to 1 of 1 entries

[Add/Edit Details](#) [Close](#)

IS #	Field Name	Acres	Status
WQMA Reports	TestField1		Not Submitted

Showing 1 to 1 of 1 entries

In the Add/Edit Details menu, there are editable fields for Actual Yield, Pre N, Post N, Manure N, and Irrigation N. There is also an Attachments field where you can choose a file that contains your data. Once the file is selected, click the check boxes that apply to the data and click on Upload Attachment.



**Crop Year:** 2024    **Operator Name:** Russell Callan    **Field Name:** Test Field (TestField1)    **Irr Water Nitrates (ppm):** N/A

<b>2024 Crop</b> CORN	<b>2023 Crop</b> SOYBEANS	<b>Acres</b> 135	<b>Soil (ppm)</b> 2.35	<b>Actual Yield (bu/ac)</b>	<b>Inhibitor</b> No
<b>Pre (lbs N/ac)</b>	<b>Post (lbs N/ac)</b>	<b>Manure (lbs N/ac)</b>	<b>Irr Inches</b>	<b>Irr (lbs N/ac)</b>	
<b>Notes</b>					



**Attachments**

Choose File    No file chosen

Please select all that apply to the file being uploaded:

- 2025 Soil Sample
- 2024 Manure Sample
- 2024 N-Inhibitor Doc

[Upload Attachment](#)

Actions	File Name	2025 Soil Sample	2024 Manure Sample	2024 N-Inhibitor Doc
No data available in table				

[Save](#)    [Submit for Review](#)    [Cancel](#)



**Crop Year:** 2024    **Operator Name:** Russell Callan    **Field Name:** Test Field (TestField1)    **Irr Water Nitrates (ppm):** N/A

<b>2024 Crop</b> CORN	<b>2023 Crop</b> SOYBEANS	<b>Acres</b> 135	<b>Soil (ppm)</b> 2.35	<b>Actual Yield (bu/ac)</b>	<b>Inhibitor</b> No
<b>Pre (lbs N/ac)</b>	<b>Post (lbs N/ac)</b>	<b>Manure (lbs N/ac)</b>	<b>Irr inches</b>	<b>Irr (lbs N/ac)</b>	
<b>Notes</b>					

**Attachments**

Choose File    No file chosen

Please select all that apply to the file being uploaded:

- 2025 Soil Sample
- 2024 Manure Sample
- 2024 N-Inhibitor Doc

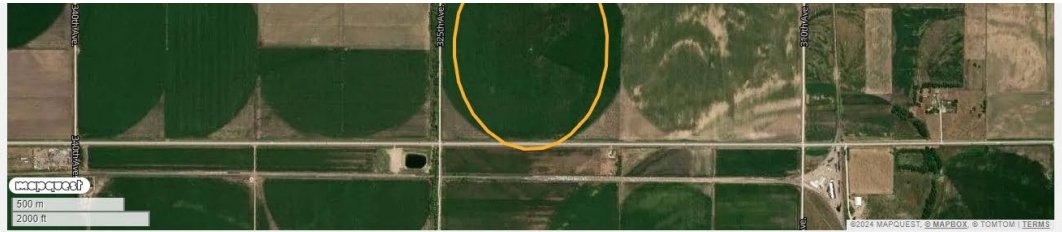
[Upload Attachment](#)

Actions	File Name	2025 Soil Sample	2024 Manure Sample	2024 N-Inhibitor Doc
No data available in table				

[Save](#)    [Submit for Review](#)    [Cancel](#)



Once you have filled the available information fields, click the green Save button at the bottom of the page, then click the green Submit for Review button.



<b>Crop Year:</b>	<b>Operator Name:</b>	<b>Field Name:</b>	<b>Irr Water Nitrates (ppm):</b>
2024	Russell Callan	Test Field (TestField1)	N/A

<b>2024 Crop</b>	<b>2023 Crop</b>	<b>Acres</b>	<b>Soil (ppm)</b>	<b>Actual Yield (bu/ac)</b>	<b>Inhibitor</b>
CORN	SOYBEANS	135	2.35		No
<b>Pre (lbs N/ac)</b>	<b>Post (lbs N/ac)</b>	<b>Manure (lbs N/ac)</b>	<b>Irr Inches</b>	<b>Irr (lbs N/ac)</b>	
<b>Notes</b>					

Attachments

Choose File No file chosen

Please select all that apply to the file being uploaded:

- 2025 Soil Sample
- 2024 Manure Sample
- 2024 N-Inhibitor Doc

[Upload Attachment](#)

Actions	File Name	2025 Soil Sample	2024 Manure Sample	2024 N-Inhibitor Doc
No data available in table				

[Save](#) [Submit for Review](#) [Cancel](#)



If you have any questions pertaining to the WQMA Producer Dashboard, please contact Ryan Hellbusch ([rhellbusch@lnrd.org](mailto:rhellbusch@lnrd.org)) or Mike Lorenz ([mikel@lnrd.org](mailto:mikel@lnrd.org)).